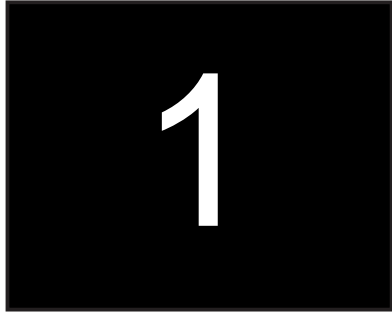


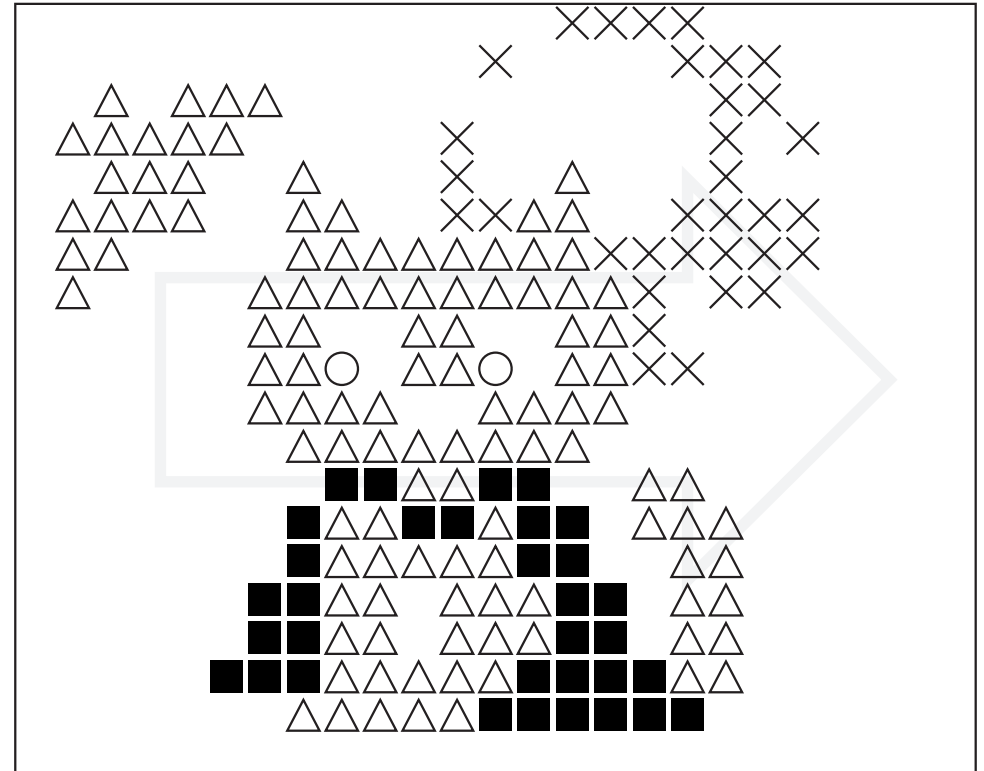
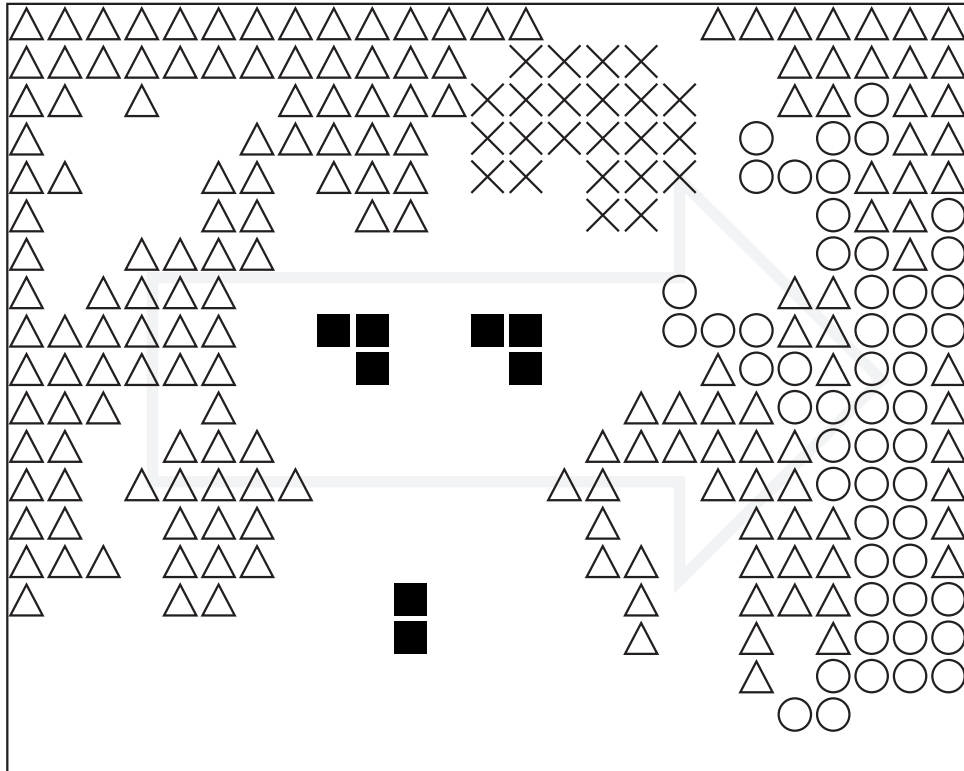
Number of Baseplates = 1 pieces  
Number of Pixelsquares = 14 pieces  
Number of Colors = 10 pieces

100 = 1  
130 = 1  
182 = 1  
294 = 3  
306 = 1  
343 = 1  
391 = 1  
441 = 2  
447 = 1  
505 = 2

- = (100)
- = (130)
- × = (182)
- △ = (294)



- = (306)
- = (343)
- × = (391)
- △ = (441)



■ = (447)

○ = (505)

