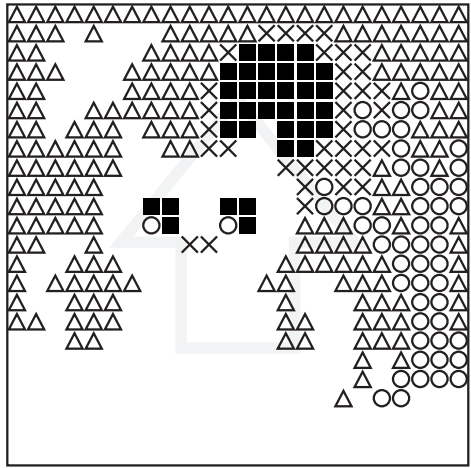


Number of Baseplates = 1 pieces
Number of Pixelsquares = 8 pieces
Number of Colors = 7 pieces

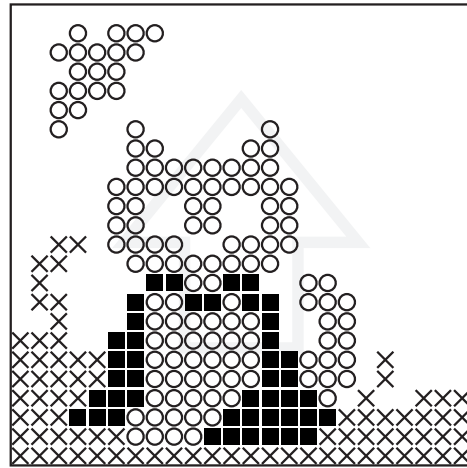
100 = 1
130 = 1
271 = 1
294 = 2
306 = 1
441 = 1
505 = 1

1



■ = (100) ○ = (130) × = (271)
△ = (294)

1



■ = (306) ○ = (441) × = (505)