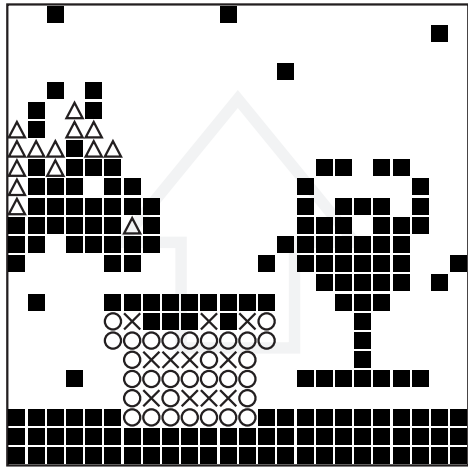


Number of Baseplates = 1 pieces
Number of Pixelsquares = 12 pieces
Number of Colors = 10 pieces

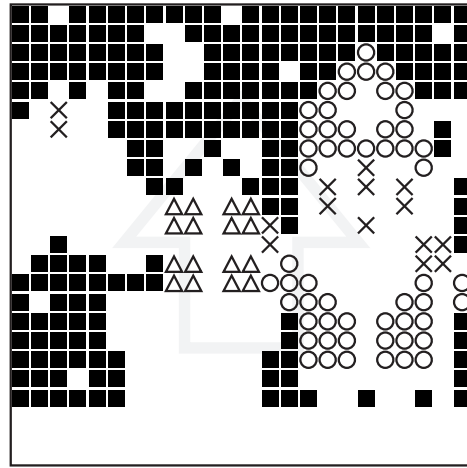
100 = 2
130 = 1
263 = 1
277 = 1
294 = 2
306 = 1
376 = 1
389 = 1
392 = 1
441 = 1

1



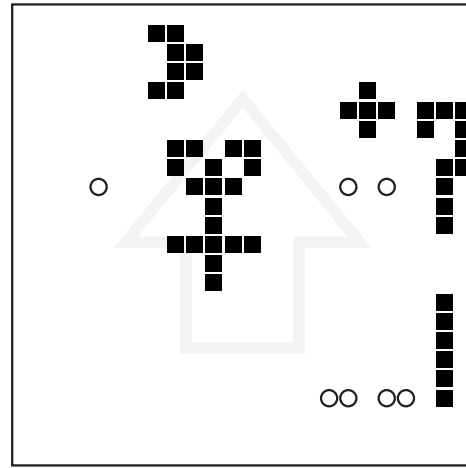
■ = (100) ○ = (130) × = (263)
△ = (277)

1



■ = (294) ○ = (306) × = (376)
△ = (389)

1



■ = (392) ○ = (441)